

# LSB4MPS3-IP-2.7-13.5-IR60

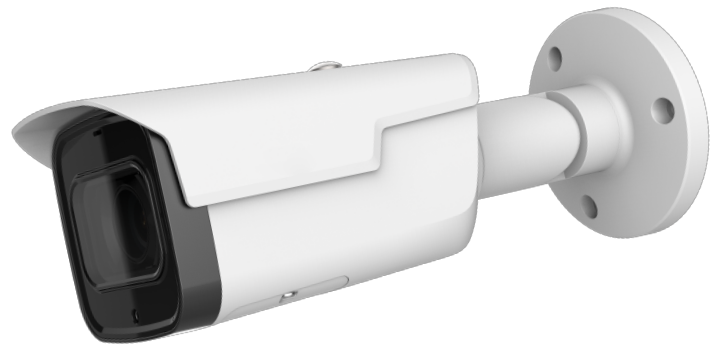
4MP WDR Starlight SMD IP Bullet Camera 2.7~13.5MM Motorized Lens

## System Overview

This IP camera delivers 4MP resolution with a 2.7~13.5mm motorized lens. Attractive camera with easy mounting solutions provides a great choice for a variety of small to mid-size application like public safety, transportation, education and commercial buildings.

## Features

- 1-2.7" 4 Megapixel progressive CMOS
- Up to H.265+ dual-stream encoding
- 4MP (2688 x 1520)@30fps, max
- WDR (120dB), Starlight
- 2.7~13.5mm motorized lens
- IR up to 197' (60m)
- IVS: Intrusion, tripwire
- Abnormality detection
- Max 256 GB SD card option
- IP67, PoE
- SMD (Smart Motion Detection)



## Functions

Smart H.265+ technology reduces bit rate and storage requirements by up to 70% when compared to standard H.264 video compression.

Wide Dynamic Range (WDR) The camera achieves vivid images, even in the most intense contrast lighting conditions. For applications with both bright and low lighting conditions that change quickly, true WDR (120 dB) optimizes both the bright and dark areas of a scene at the same time to provide usable video.

Starlight technology helps provide clear colorful video at night or in low light environments.

The camera allows for  $\pm 30\%$  input voltage tolerance, suitable for the most unstable conditions for outdoor applications. Subjected and certified to rigorous dust and immersion tests (IP67), the camera is the choice for installation in even the most unforgiving environments.

This camera operates in extreme temperature environments, rated for use in temperatures from  $-30^{\circ}\text{C}$  to  $+60^{\circ}\text{C}$  ( $-22^{\circ}\text{F}$  to  $+140^{\circ}\text{F}$ ) with 95% humidity.

Smart Motion Detection (SMD) is an intelligent algorithm and can effectively recognize target types like Cars and Humans and ignore other types of motion like trees, rain, animals etc. This allows for more efficient alarm triggers.

# Specifications

## Camera

Image Sensor	1-2.7" 4 Megapixel CMOS
Effective Pixels	2688(H) x 1520(V)
RAM/ROM	512MB / 128MB
Scanning System	Progressive
Electronic Shutter Speed	Auto/Manual, 1/3~1/100000s
Minimum Illumination	0.01Lux/F1.5
IR Distance	Distance up to 197' (60m)
IR On/Off Control	Auto/Manual
IR LEDs	4
Pan/Tilt Range	Pan:0° ~360°; Tilt:0° ~90°; Rotation:0° ~360°

## Lens

Lens Type		Motorized vari-focal			
Mount Type		Board-in			
Focal Length		2.7mm~13.5mm			
Max. Aperture		F1.5			
Field of View		H:104°-27°, V:55°-15°,D:124°-31°			
Focus Control		Auto			
Close Focus Distance		2.62' (0.8m)			
DORI	Lens	Detect	Observe	Recognize	Identify
Distance	W	210'	84'	42'	21'
*(estimate)	T	721'	291'	145'	72'

## Smart Event

IVS	Intrusion, tripwire (Human and Vehicle)
-----	---

## Video

Compression	H.265+/H.265, H.264+, H.264, MJPEG
Streaming Capability	2 Streams, (Main, Sub)
Resolution	4M(2688x1520/3M(2304x1296) / 1080P (1920x1080) / 1.3M (1280x960) / 720P (1280x720) / D1(704x576/704x480) / CIF (352x288/352x240)
Frame Rate	4M (1 ~ 30fps)
Bit Rate Control	CBR/VBR
Bit Rate	H.264: 3Kbps ~ 8192Kbps H.265: 3Kbps ~ 8192Kbps
Day/Night	ICR switch
WDR	True WDR (120dB)
White Balance	Auto/Natural/Street Lamp/Outdoor/Manual
Gain Control	Auto/Manual
Noise Reduction	3D DNR
Motion Detection	Off / On (4 Zone, Rectangle)
Region of Interest	Off / On (4 Zone)
Smart IR	Support
Flip	0°/90°/180°/270° (Support 90°/270° at 2MP)
Mirror	Off / On
Privacy Masking	Off / On (4 Area, Rectangle)

## Audio

Compression	G.711a; G.711Mu; G726; AAC
-------------	----------------------------

## Network

Ethernet	RJ-45 (10/100Base-T)
Protocol	HTTP;TCP;ARP;RTSP;RTP;UDP;RTCP;SMTP;FTP;DHCP;DNS;DDNS;PPPOE;IPv4/v6;SNMP;QoS;UPnP;NTP, 802.1x, Multicast, HTTPS, SFTP, ICMP, IGMP
Interoperability	ONVIF, CGI, P2P
Max. User Access	20 (Total bandwidth 64M)
Edge Storage	FTP, Micro SD Card 256GB, NAS
Web Viewer	IE, Google, Firefox
Mgt. Software	Smart PSS, DSS, P2P
Smart Phone	iOS, Android

## Certifications

Certifications	CE, UL, FCC
----------------	-------------

## Drivers

Drivers/Profiles	Control 4, SAVANT
------------------	-------------------

## Interface

Audio In/Out	1/1
Alarm In/Out	1 in: 5mA 3V-5V DC, 1 out: 300mA 12V DC

## Electrical

Power Supply	DC12V / PoE
Power Consumption	<9.8W

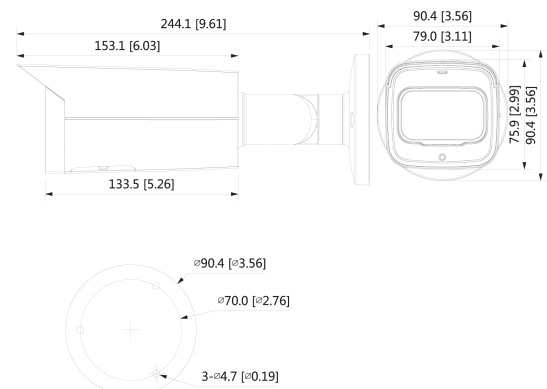
## Environmental

Operating Conditions	-30° C ~ +60° C (-22° F ~ +140° F) / Less than 95% RH
Storage Conditions	-40° C ~ +60° C (-40° F ~ +140° F) / Less than 95% RH
Ingress Protection	IP67
Vandal Resistance	N/A

## Construction

Casing	Metal
Dimensions	9.61" x 3.1" x 3.0" (244.1x79x75.9mm)
Net Weight	1.81lb (0.82Kg)
Gross Weight	2.4lb (1.08Kg)

## Dimensions



ZM08262020 Design and specifications are subject to change without notice